

Client:

Job Title:

Products Protecta FR ASF Sealant

Application Fire rated linear seals in flexible walls

Construction Minimum wall thickness of 90mm and comprise steel studs or timber studs lined on both faces with minimum 1 layer of 10 mm thick board.

Fire Classification

Single layer 10mm up, ASF 9mm, 20mm stone wool or head track	FRR -/90/90
Board 15mm up, ASF 15mm, 25mm stone wool or head track	FRR -/120/120
Board 15mm up, ASF 15mm, PE Rod	FRR -/120/90
Board 20mm up, ASF 20mm, PE Rod	FRR -/120/120



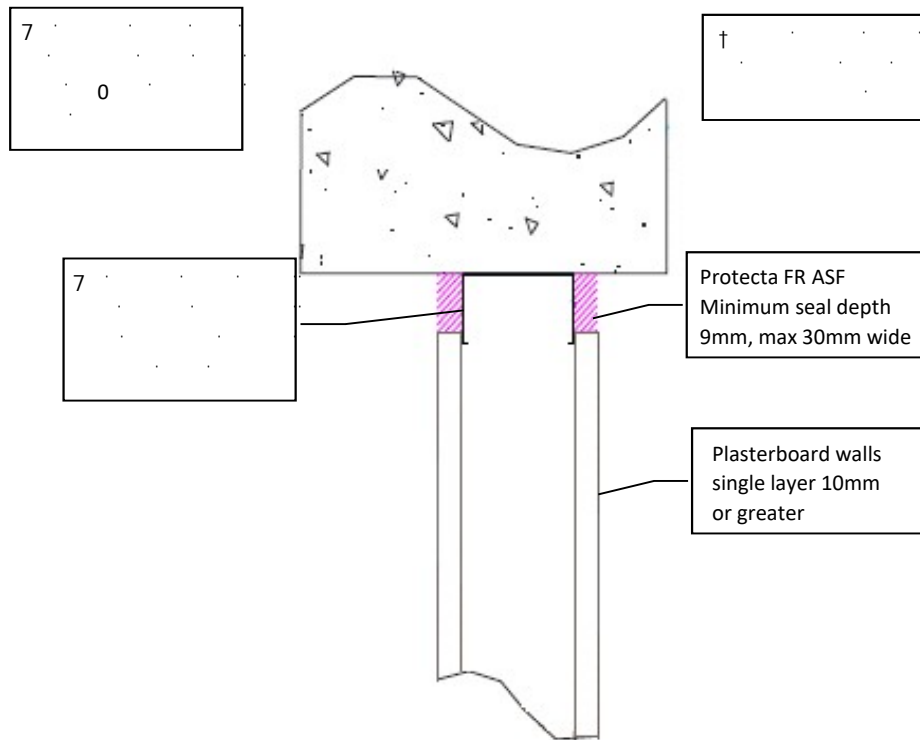
Protecta®

Polyseam Ltd, 15 St Andrews Road,
 Huddersfield, West Yorkshire, HD1 6SB
 Tel: +44 (0) 148 4421036
 Email: post.uk@polyseam.com

Sheet size: A4	Drawn date & no: 8/4/18
Scale: NTS	Drawn by: K.B

Installation Instructions

- Before installing Protecta® FR ASF ensure that the surface of all service penetrations and surrounding construction is free from all loose contaminants, dust and grease.
- Where Protecta® FR ASF is to be installed against surfaces that cannot tolerate direct contact; appropriate surface preparation should be made (contact Polyseam for guidance in these cases). For paints sensitive to sealing compounds, priming with a PVA primer is recommended.
- When installing the sealant in plasterboard, the exposed edges of the board can be wetted with water to prime the surfaces helping adhesion and preventing excessive joint shrinkage.
- When installing any backing material, cut this slightly oversize and insert into the gap ensuring a tight friction fit. Ensure correct depth is achieved.
- Fill the gap or joint with Protecta® FR ASF to the required depth.
- Apply the sealant generously to prevent air bubbles. Finish the bead with a moist spatula, pallet knife or brush.
- Protecta® FR ASF can be over-painted with most emulsion or alkyd (gloss) paints.



UL (UK) Ltd
 4787654631
 AS1530.4-2014

ETA 14/0041

As a part of our policy of on-going product development and testing, we reserve the right to modify, alter or change product specifications without giving notice. All information contained in this document is given in good faith and is provided for guidance only. Any drawings provided are for illustrative purposes only. As Polyseam has no control over the methods or competence of installation and of prevailing site conditions, no warranties, expressed or implied, is intended to be given as to the actual performance of the product mentioned or referred to herein and no liability whatsoever will be accepted for any loss, damage or injury arising from the use of the information given.

For all technical details on the products specified please refer to the technical data sheets that can be found on www.firestopcentre.co.nz

Signed and approved: